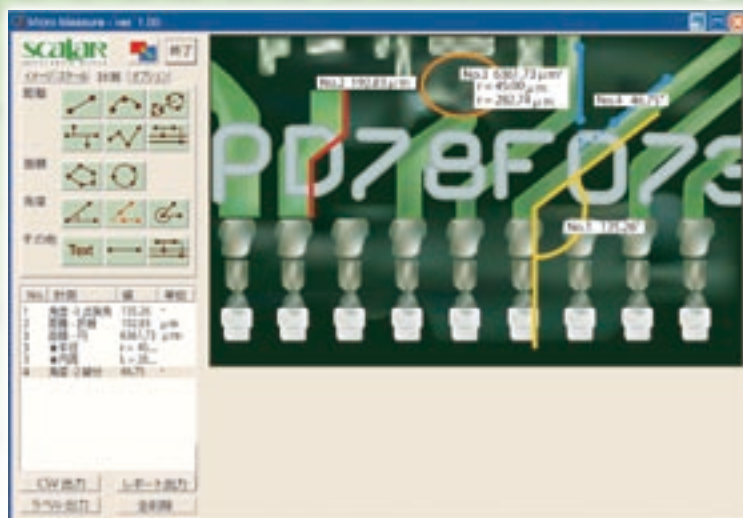


MicroMeasure

Measures distances, areas and angles of the object(s) on a still image.



Measurement Functions



Distance between 2 Points



Distance of an Arc



Distance from Circle to Circle



Distances of Perpendicular Lines from a Standard Line



Distance of a Broken Line



Distances between Parallel Lines



Area of a Polygon



Area, Radius and Circumference of a Circle



Degree of an Included Angle between 3 Points



Degree of an Included Angle between 2 Lines



Degree of an External Angle between 3 Points



Text Input



Drawing Standard Lines and Parallel Lines

System Requirements

Monitor Resolution: 1024(dot) x 768(dot) or greater
OS: Windows XP/Vista
Capture Device: Device Supporting Direct X
Application: Microsoft Office 2000/2003/2007

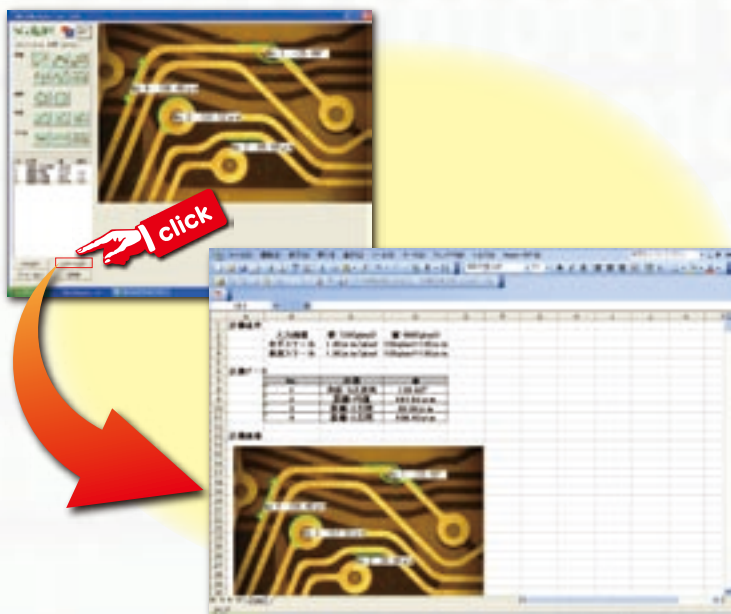
*Without Microsoft Office, "Making a Report" function does not work.

Data Saving

- Exporting data to CSV
- Saving an image with labels as JPG or BMP

Making a Report

- Making a report with an image and measured results in Microsoft Excel worksheet with just one click.



SCALAR
IMPRESSIVE WORKS

Scalar Corporation
1F. San-Ei Building 1-22-2, Nishi-Shinjuku,
Shinjuku-Ku, Tokyo 160-0023 Japan
Tel 81-3-3348-0181 Fax 81-3-3348-0188
sales@scalar.co.jp www.scalar.co.jp