

**SCALAR**  
IMPRESSIVE WORKS

# VL-5

VIDEO LOUPE

The world's first battery-operated microscope makes a debut!



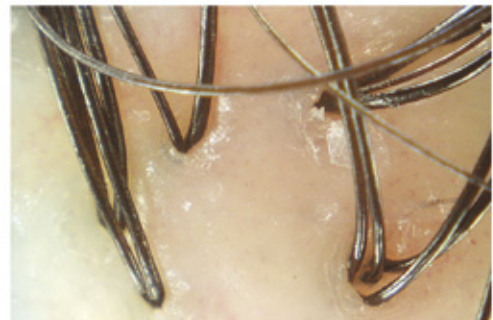
- ◆ Exchangeable lenses allow infinite expandability
- ◆ Electric-outlet-free, battery-operated (AC power source not necessary)
- ◆ Compact, lightweight and lean design, weighing no more than 120g (with batteries equipped)



50× magnification of skin  
(skin texture)



50× magnification of skin  
(pigmented spot)



100× magnification of scalp

# VL-5

VIDEO LOUPE



Scalar's technology has realized the brand-new Video Loupe VL-5. Now is the time for you to choose high performance based on style. Scalar has given shape to the world's first battery-operated pen-type video loupe.

## Electric-outlet-free, battery-operated (AC power source not necessary)

This battery-operated device requires no electric outlet, making thorough power saving possible. Scalar has made dry-cell-based operation and a built-in light source compatible, which is one of the features of the VL-5 that shouldn't be missed. This liberates the user from an AC power source, improving user friendliness significantly.

## Lean design

The VL-5 features the world's first pen-shaped slim body, weighting no more than 120g. Despite such a small and lightweight body, it provides every user with a clear-cut image.

## Specifications

Imaging device	1/3-inch 510HC MOS sensor
Effective sensor resolution	Approx. 250,000 pixels
Signaling type	2:1 Interface NTSC
White balance	Fixed
Recommended battery	Two AA alkaline dry cells, approx. 3 hours
Duration	Two AA nickel metal-hydride batteries, approx. 6.5 hours
Light source	White LED
Dimensions and weight	29 mm (W) x 176 mm (D) x 34 mm (H); weight: 120 g (with alkaline dry cells equipped)

## Lenses

- 50× magnification N lens — For checking skin (skin texture/pigmented spots)
- 100× magnification lens — For checking scalp

## For barber shops/beauty salons

A powerful tool for assisting barber shops/beauty salons with their hair growth course

The VL-5 will be an added bonus to your service as a hair-checking tool.

To show a customer his/her hair follicles or roots by magnifying them, use the 100× magnification lens.

## Kits



VL-5 Set

Probe, lens,  
AA alkaline dry cells

### \*Skin Check Set

Comes with a 50× magnification lens (for checking skin texture/pigmented spots)

### \*Hair Check Set

Comes with a 100× magnification lens (for checking scalp)



100× magnification lens



100× magnification of scalp

## For esthetic salons/cosmetics shops

As a skin-checking tool for assisting esthetic salons / cosmetics shops with the sales promotion of their skinwhitening / wrinkle care cosmetics.

For skin check



50× magnification  
N lens



50× magnification of  
skin texture



50× magnification of  
a pigmented spot

With the VL-5, you will be able to explain the state of the customer's skin on the spot, thereby providing reassurance and satisfactory service.

To show the state of the skin, such as rough dry skin, a pigmented spot, wrinkles or blackheads, use the 50\_ magnification lens.

By switching the reflecting/non-reflecting lenses with a single touch of a button, you can show a pigmented spot or the skin texture on the same area.

**SCALAR**  
IMPRESSIVE WORKS

For inquiries:

Scalar Corporation

Head office : 3-28-6 Yoyogi, Shibuya-ku, Tokyo 151-0053

TEL: 03-3378-6101 FAX: 03-3378-6066