

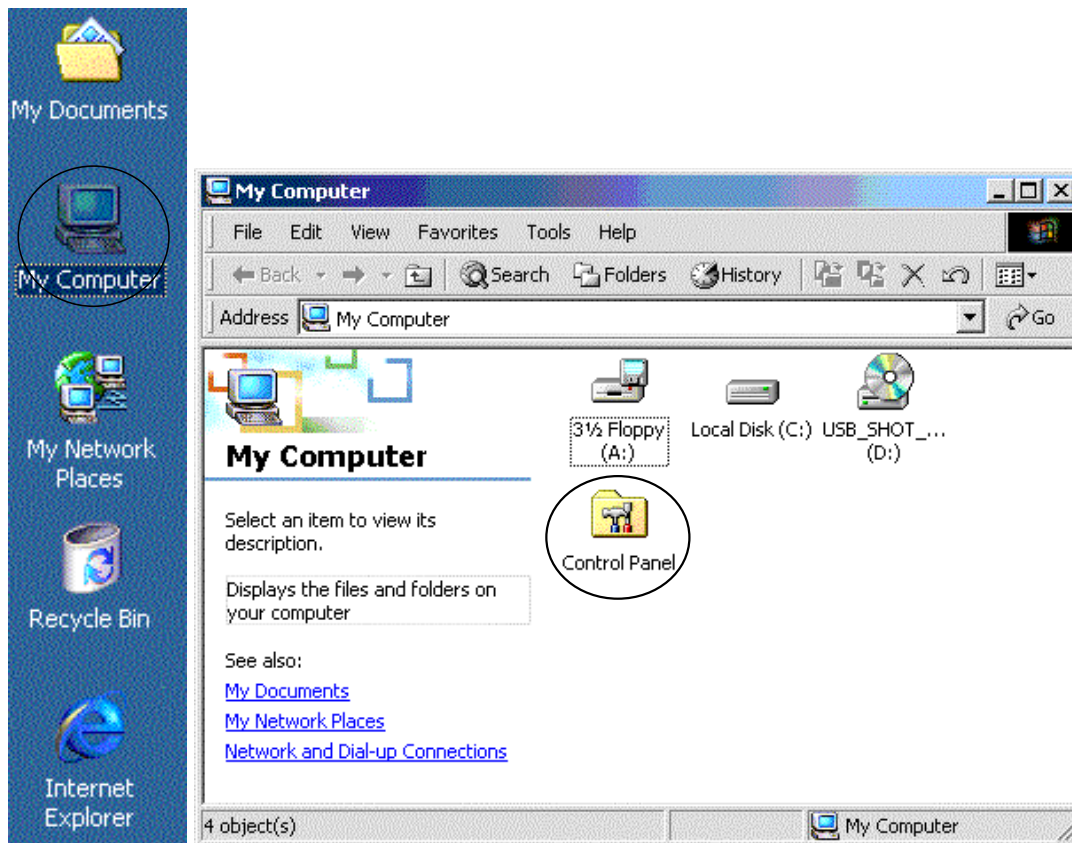
Updating the Driver Windows 2000

To update the driver software, you must replace the older version residing on your PC with the most recent version.

The procedure for updating the Driver is described below.



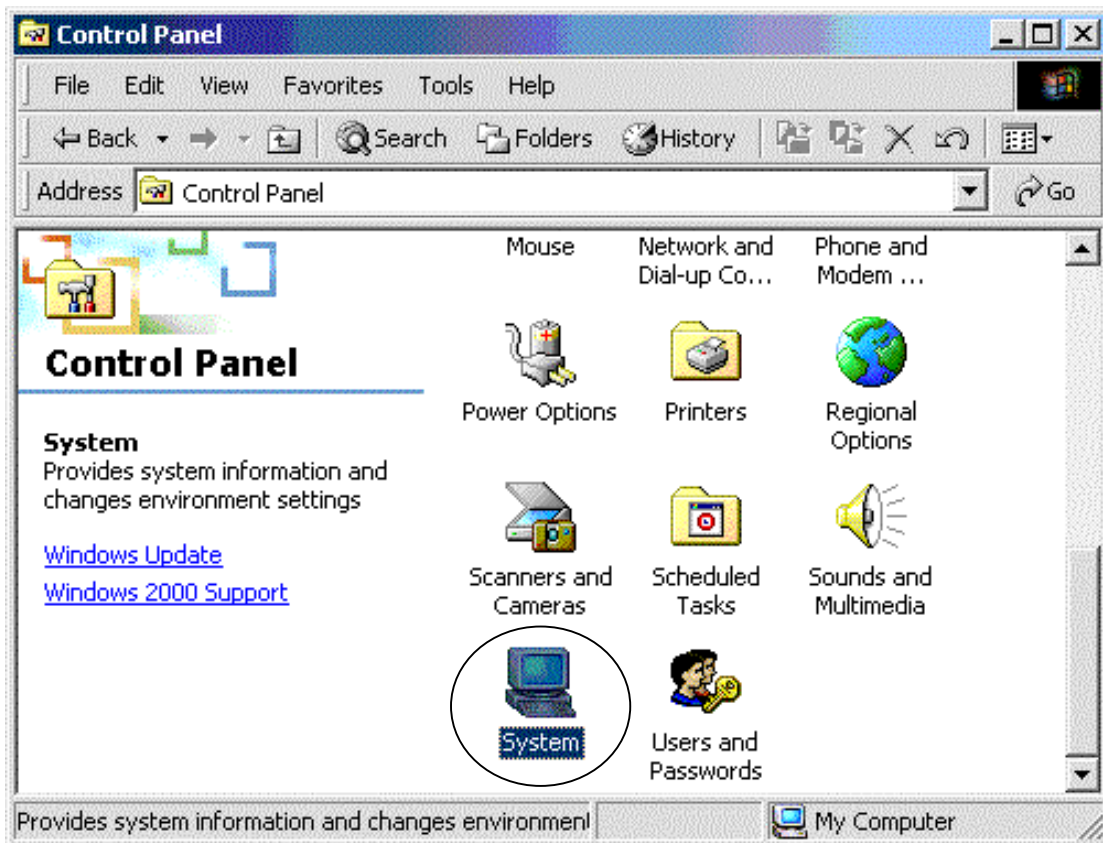
Plug the connector of the USB Microscope into the PC USB port.



Double-click the "My Computer" icon on the desktop (PC screen).

Note: While the actual items displayed on the Desktop will vary from computer to computer, the "My Computer" icon in most cases will be found in the upper left of your screen.

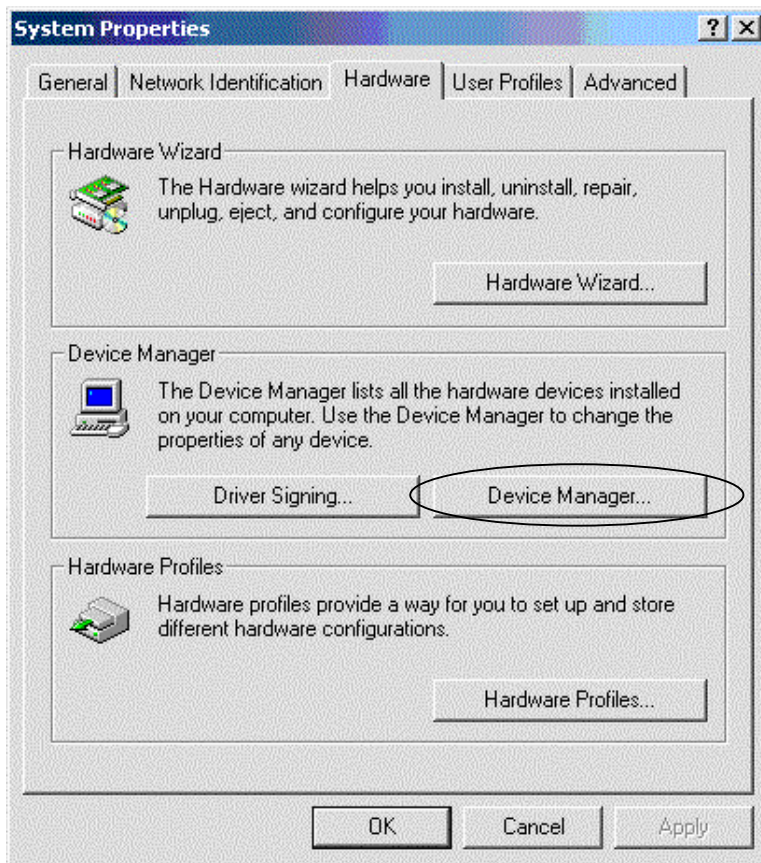
Double-clicking "My Computer" displays the following window.
Double-click Control Panel in the window.



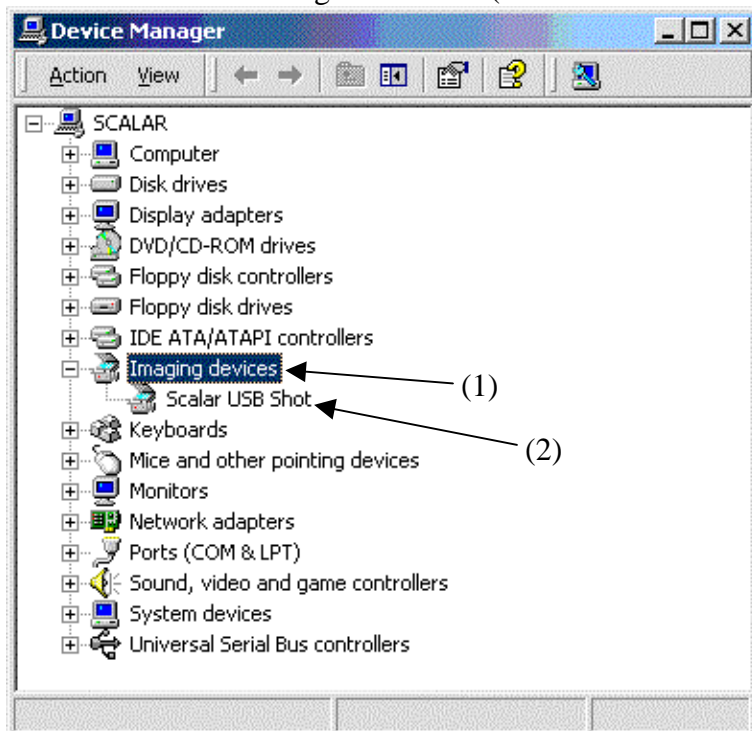
Double-click System to display the following screen.



Click the [Hardware] tab (circled in the illustration).



Click the "Device Manager..." button (circled in the illustration).



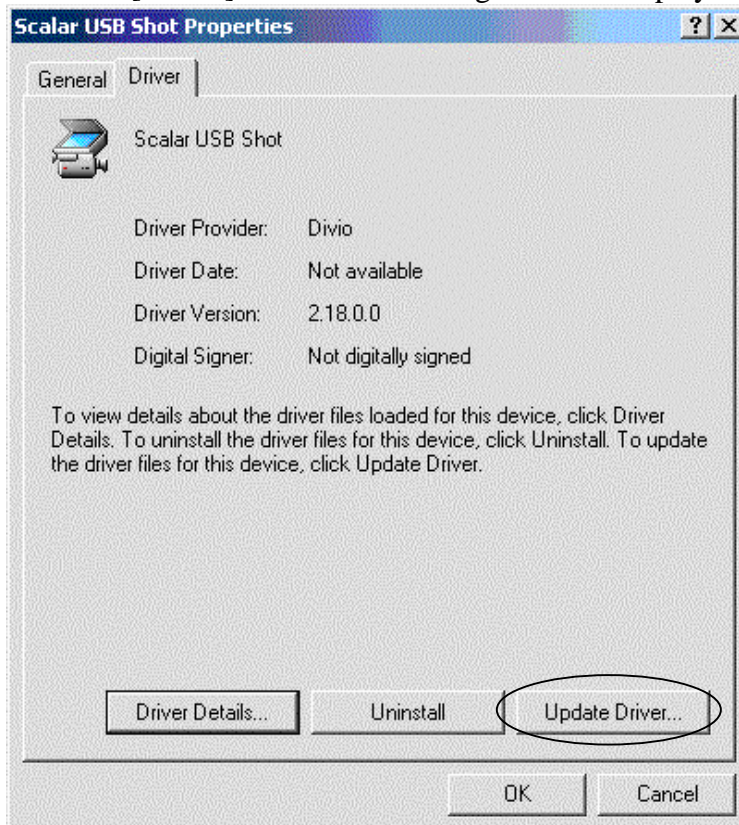
Double-click [Imaging Devices] (part (1)).

The name of the driver (Scalar USB Shot) is displayed.

Double-click Scalar USB Shot (part (2)). The following screen is displayed.



Click the [Driver] Tab. The following screen is displayed.



Click [Update Driver...] button.

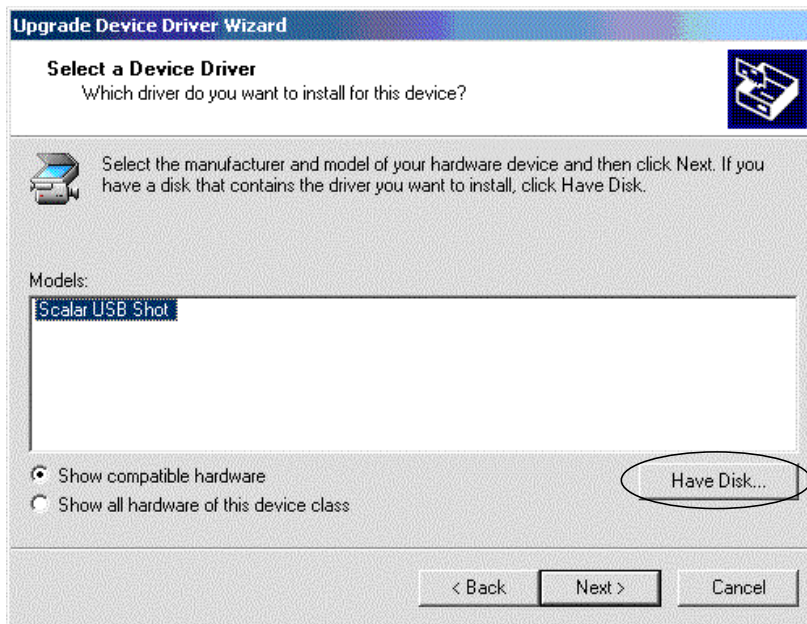


Click "Next>".

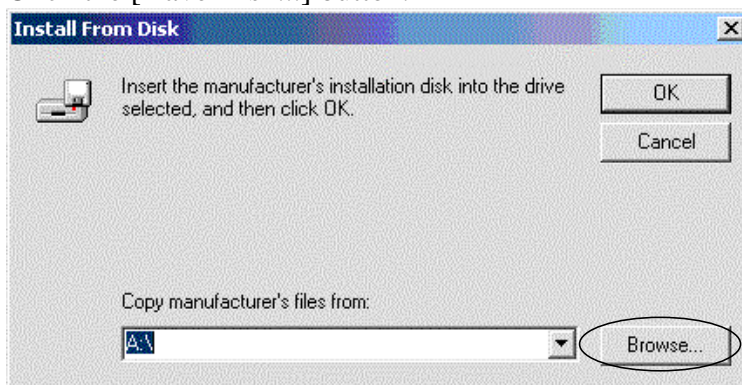


Click "Display a list of the known drivers...".

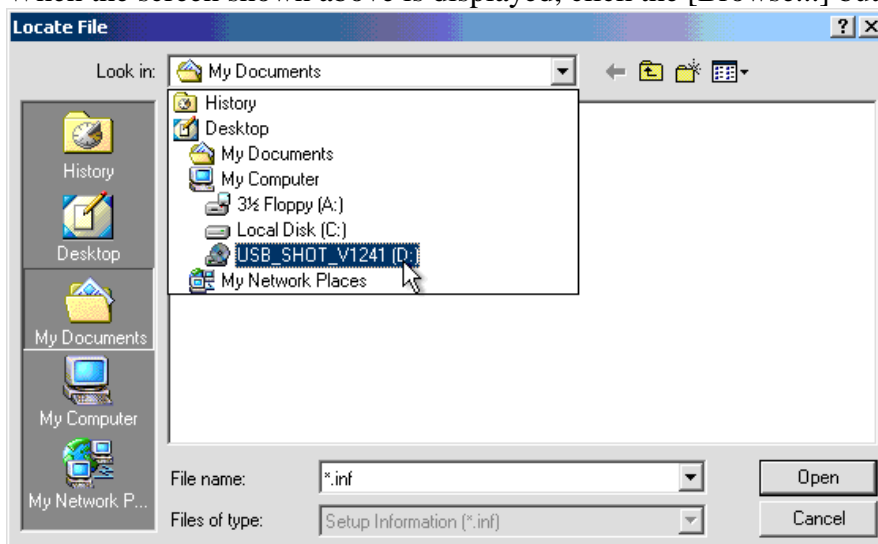
Click "Next>".



Click the [Have Disk...] button.



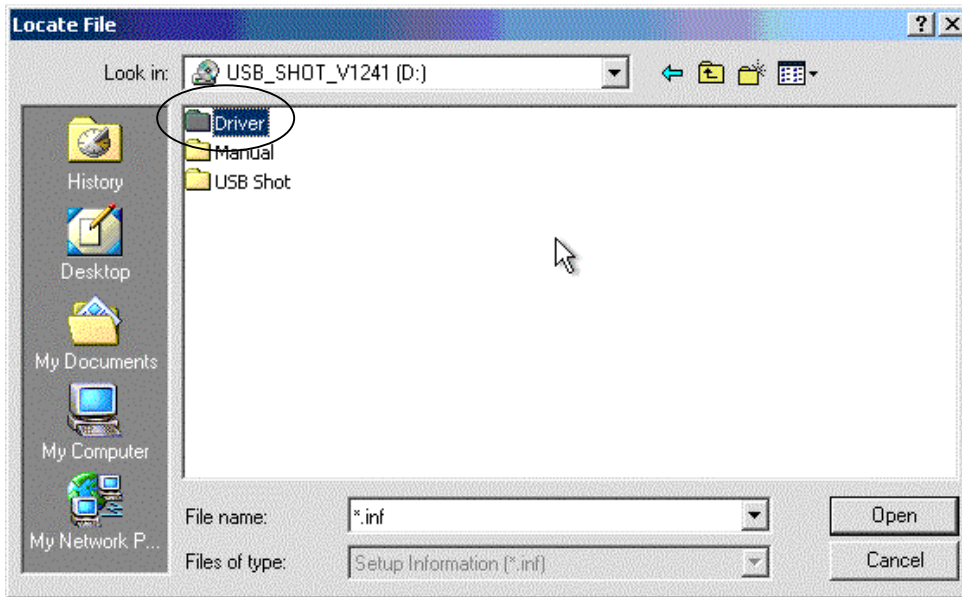
When the screen shown above is displayed, click the [Browse...] button.



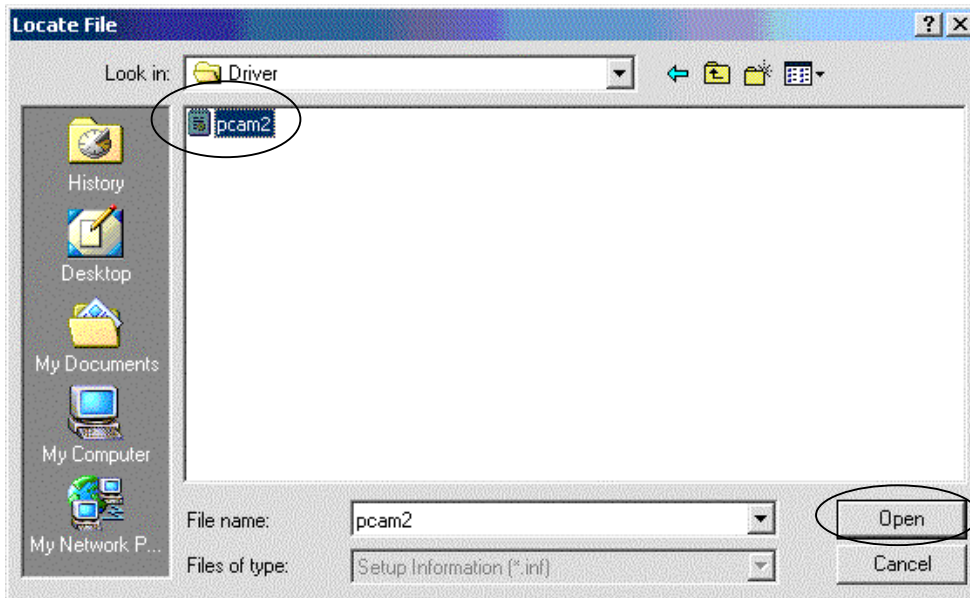
Next, specify the location of the driver. For the sake of example, we'll assume that the driver is located on the CD-ROM.

Click the "Look in" Pop-up Menu and select the "USB_SHOT" Icon on Pop-up Menu.

Continuing with the example, we'll select CD-ROM drive (D:) here. The following screen is displayed.



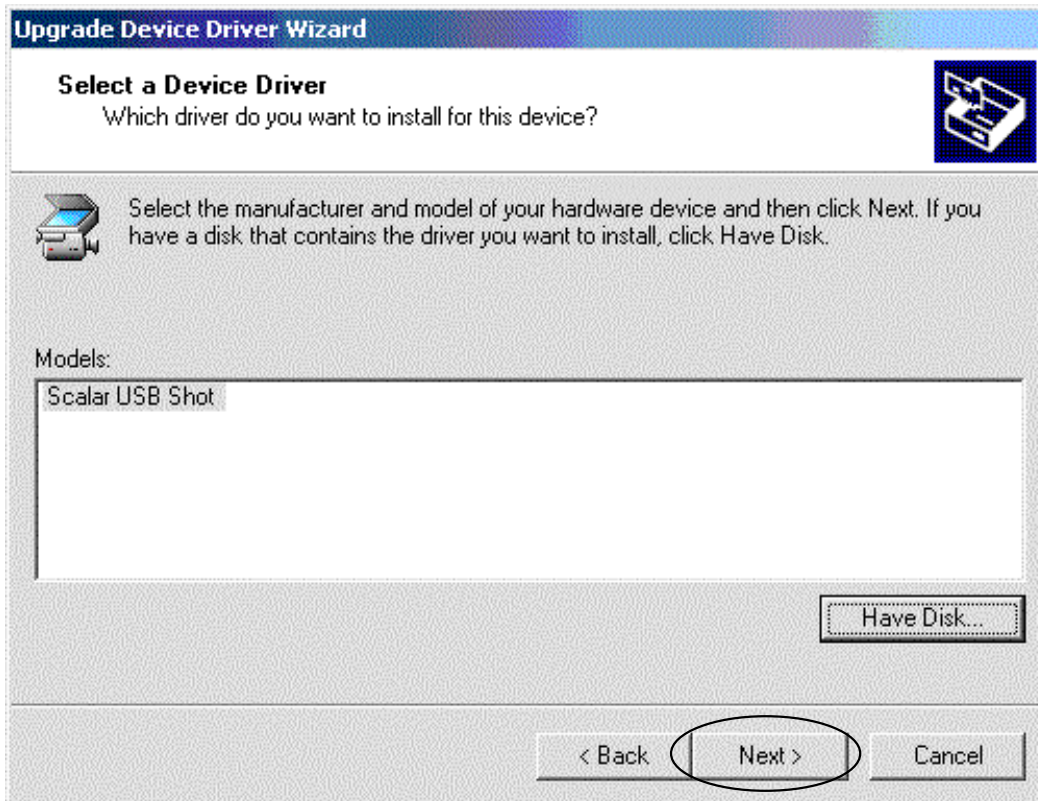
Double click "Driver".



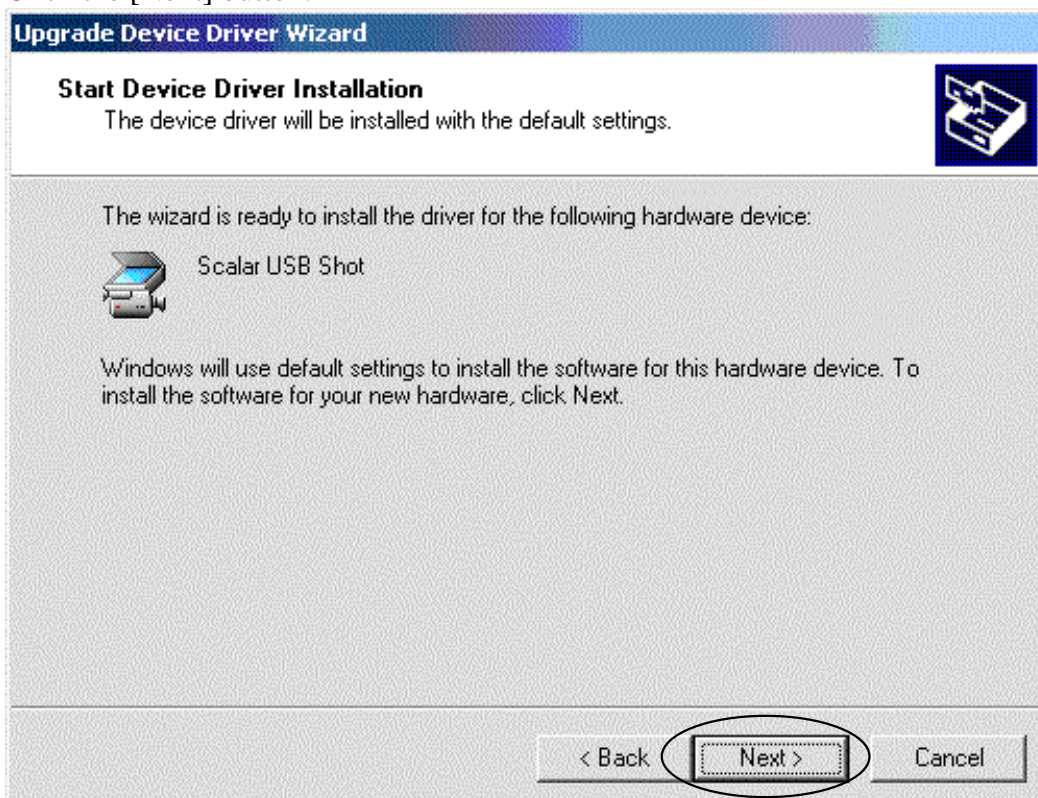
Click "pcam2" and "Open" button.



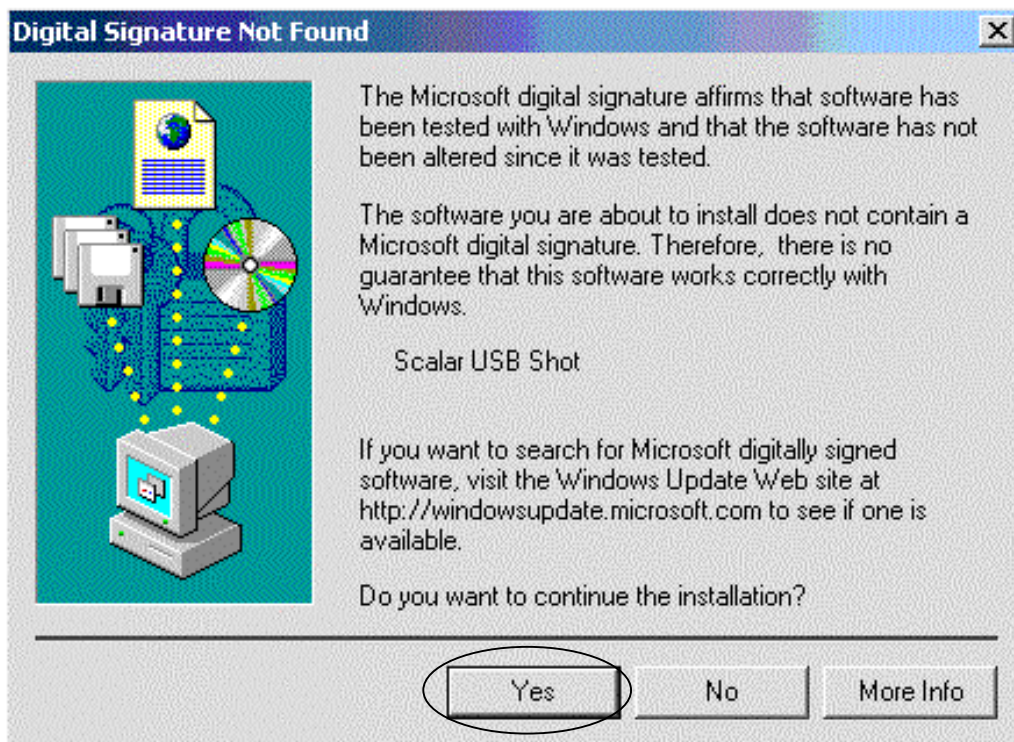
When the screen shown above is displayed, click the [OK] button.



Click the [Next] button.



Click the [Next] button.



When the screen shown above is displayed, click the [Yes] button.



Driver installation starts. The screen shown above is displayed after a brief interval. Click the [Finish] button in this screen.

This completes the driver update.