

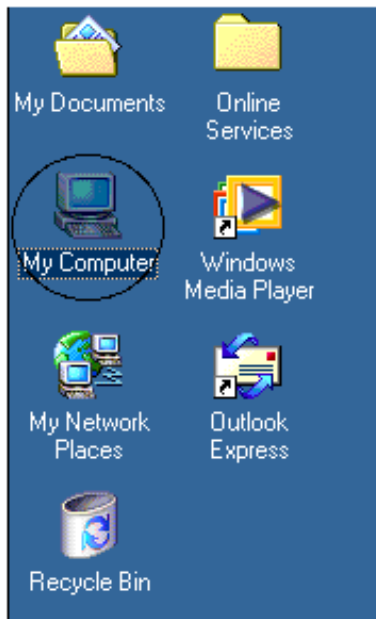
Updating the Driver Windows ME

To update the driver software, you must replace the older version residing on your PC with the more recent version.

The procedure for updating the Driver is described below.



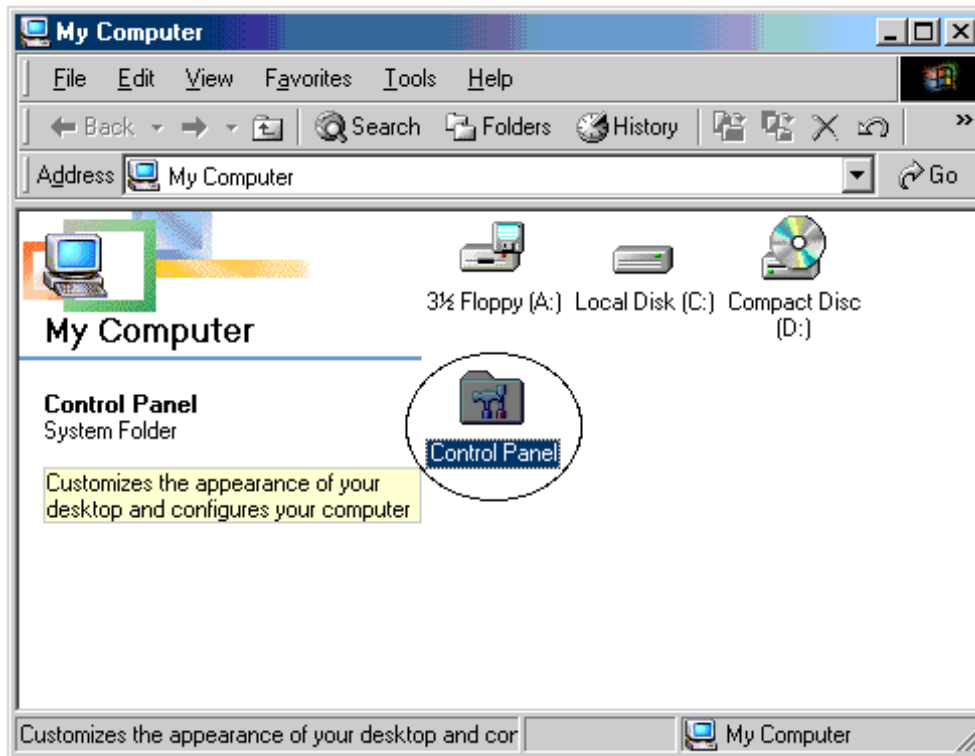
Plug the connector of the USB Microscope into the PC USB port.



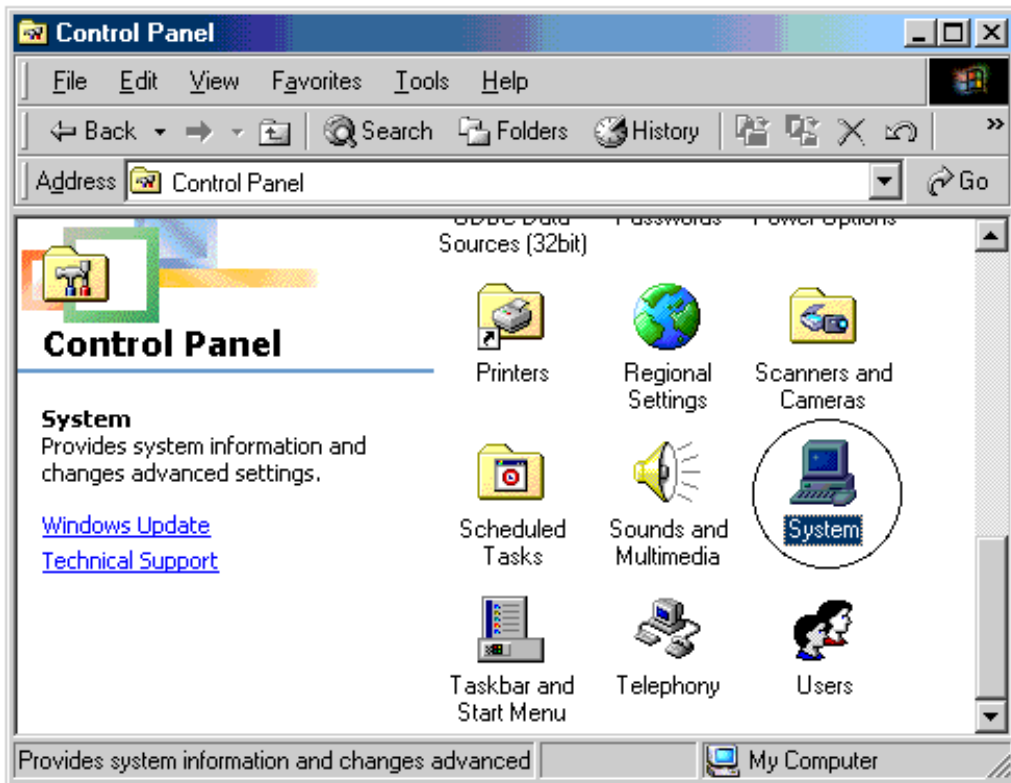
Double-click the My Computer icon on the desktop (PC screen).

Note: While the actual items displayed on the Desktop will vary from computer to computer, the My Computer icon in most cases will be found in the upper left of your screen.

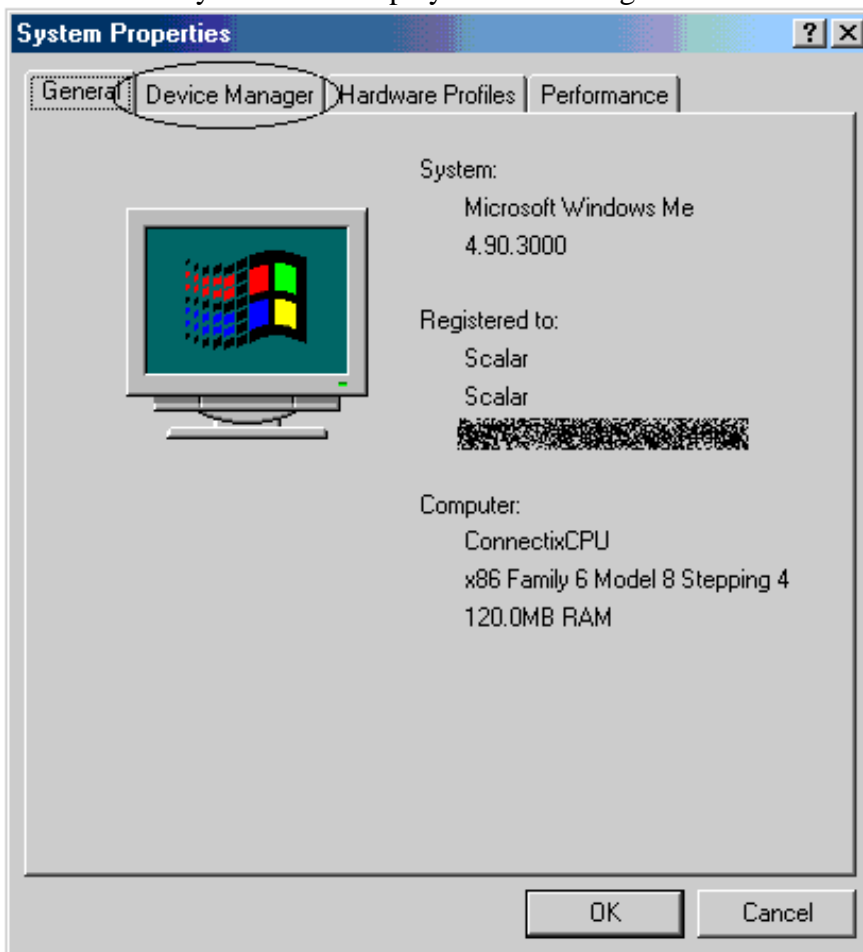
Double-clicking My Computer displays the following window.



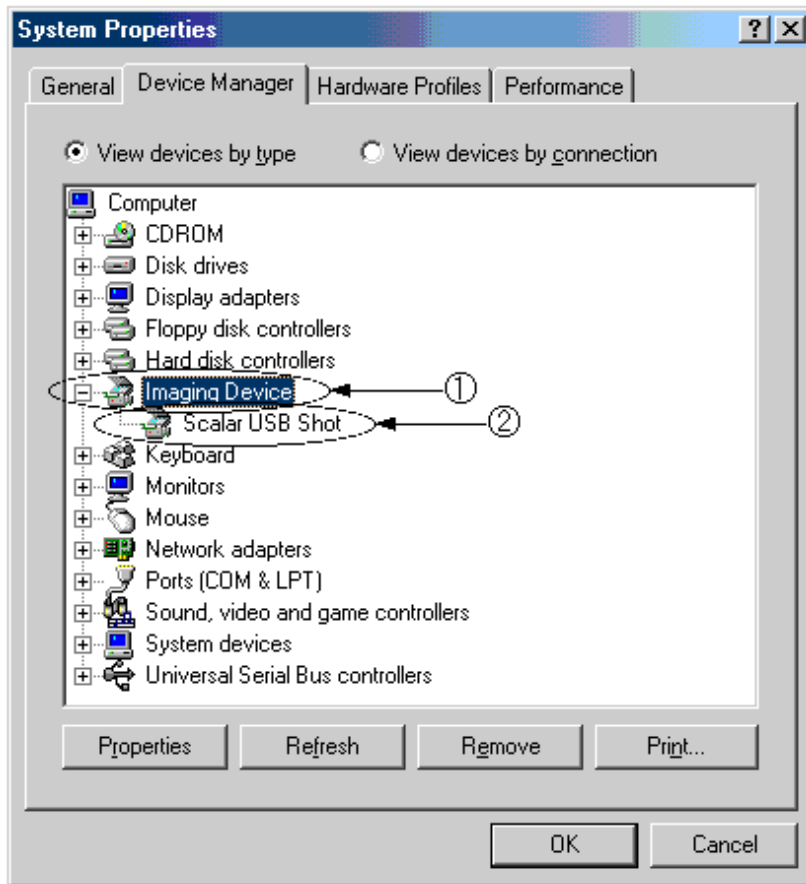
Double-click Control Panel in the window.



Double-click System. This displays the following screen.



Click the [Device Manager] tab (circled in the illustration).



Double-click [Imaging Device] (part (1)).

The name of the driver (Scalar USB Shot) is displayed.

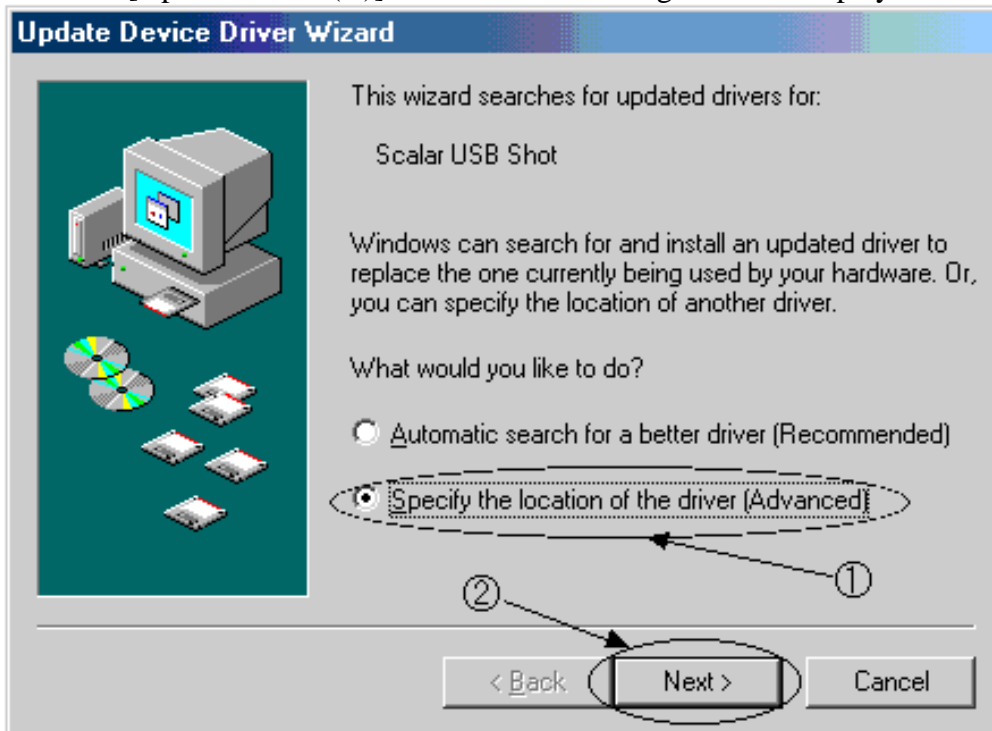
Double-click Scalar USB Shot (part (2)). The following screen is displayed.



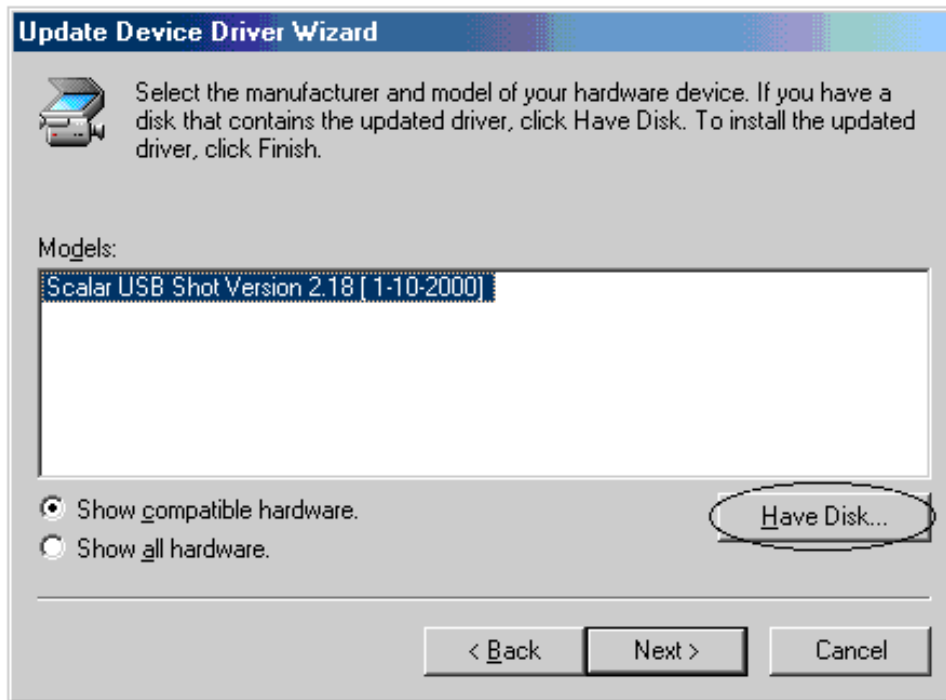
Click the Driver tab (circled in the illustration).



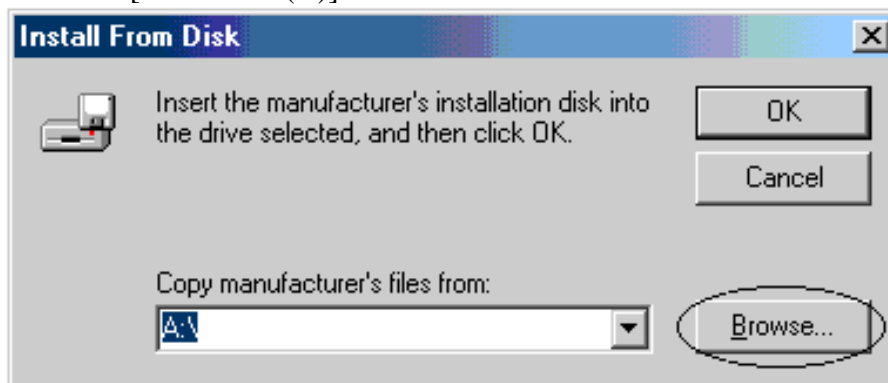
Click the [Update Driver (U)] button. The following screen is displayed.



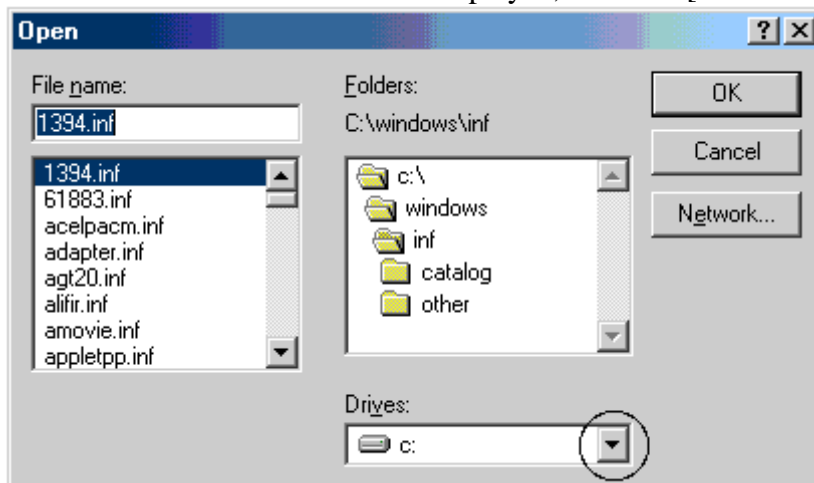
Specify the search method. Select [Specify the location of the driver]. (1) After making the selection, click [Next]. (2)



Click the [Have Disk (H)] button here.



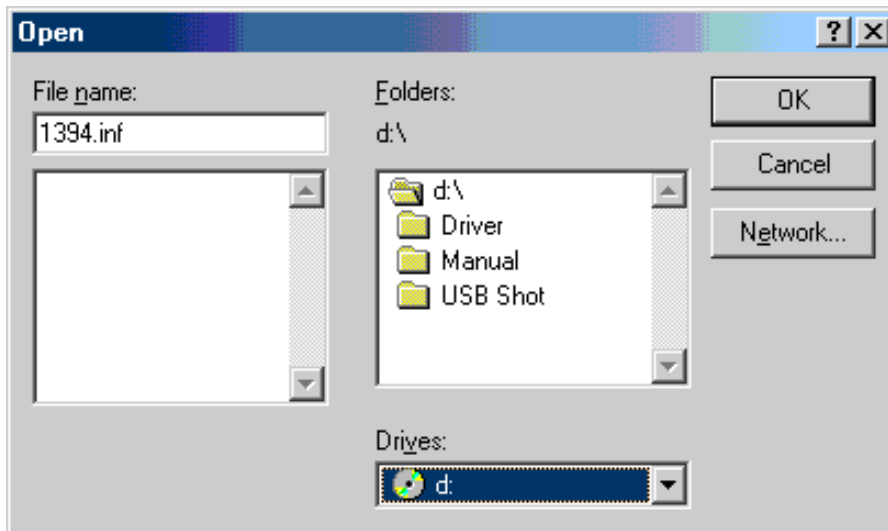
When the screen shown above is displayed, click the [Browse...(B)] button.



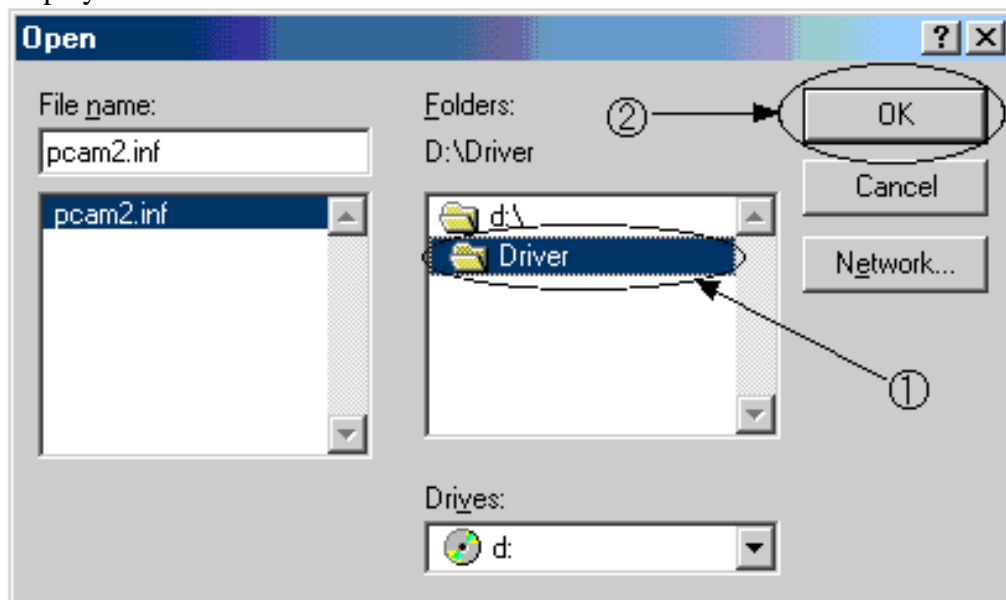
Next, specify the location of the driver. For the sake of example, we'll assume that the driver is located on the CD-ROM.

Click the [Drive (V)] button (circled in the illustration).

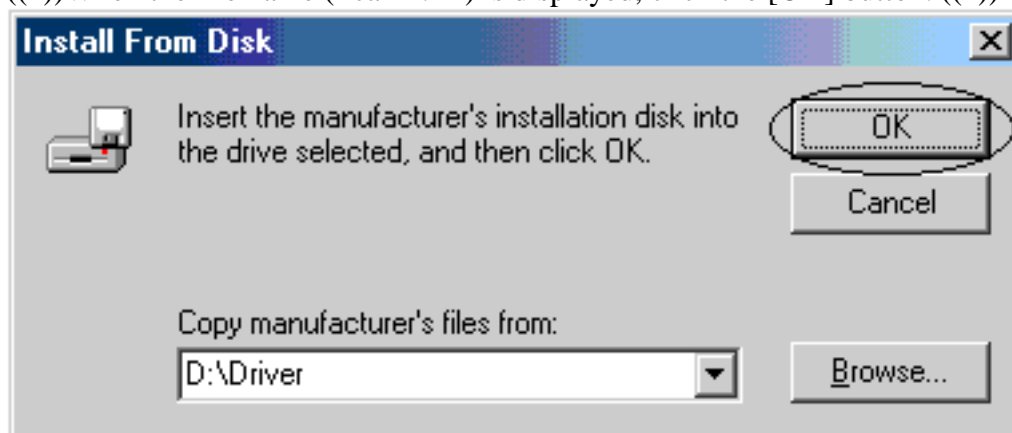
Clicking the button displays the different drives available on your system. Select a drive.



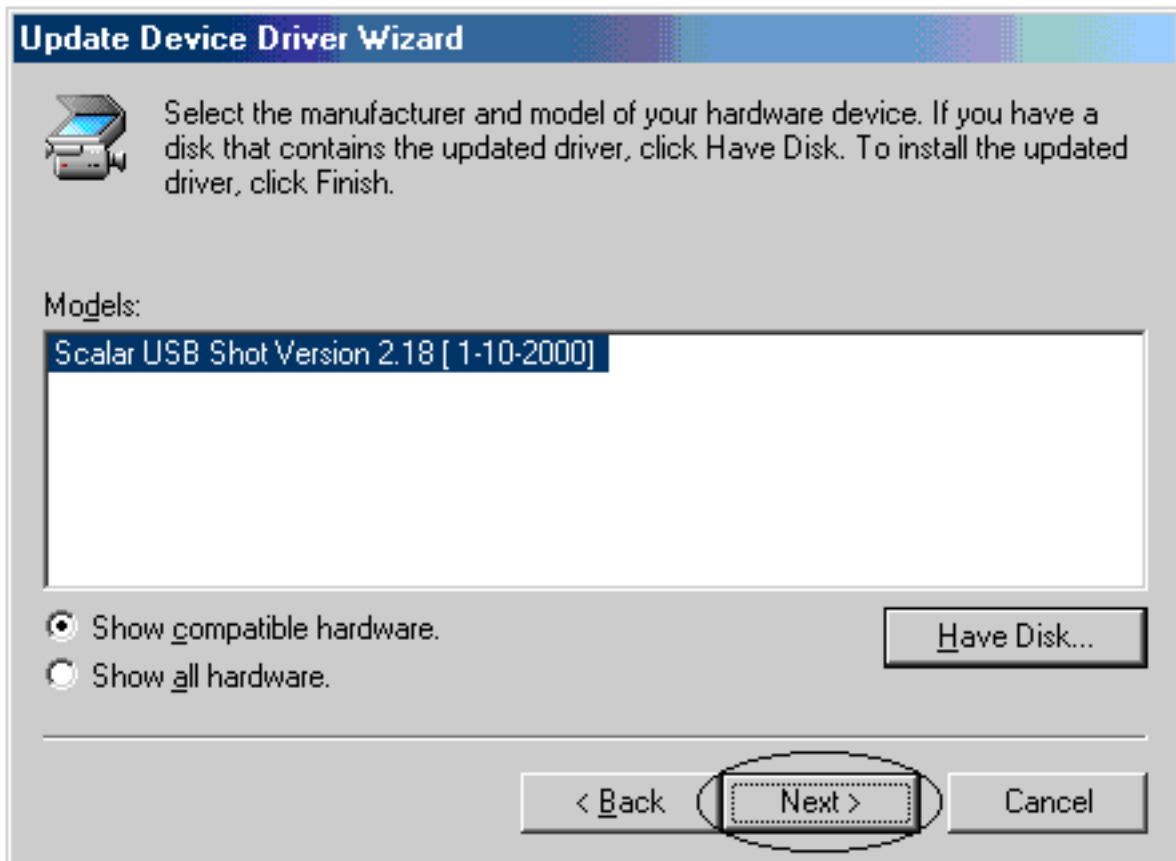
Continuing with the example, we'll select CD-ROM drive d: here. The following screen is displayed.



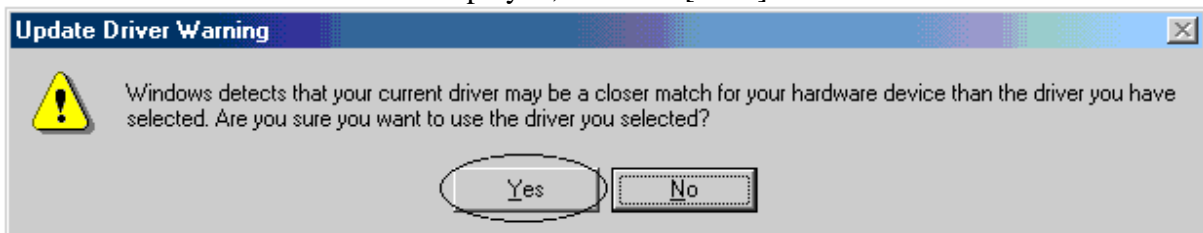
Specify the location of the driver. Here, double-click the Driver folder on the CD-ROM. ((1))When the file name (Pcam2.inf) is displayed, click the [OK] button. ((2))



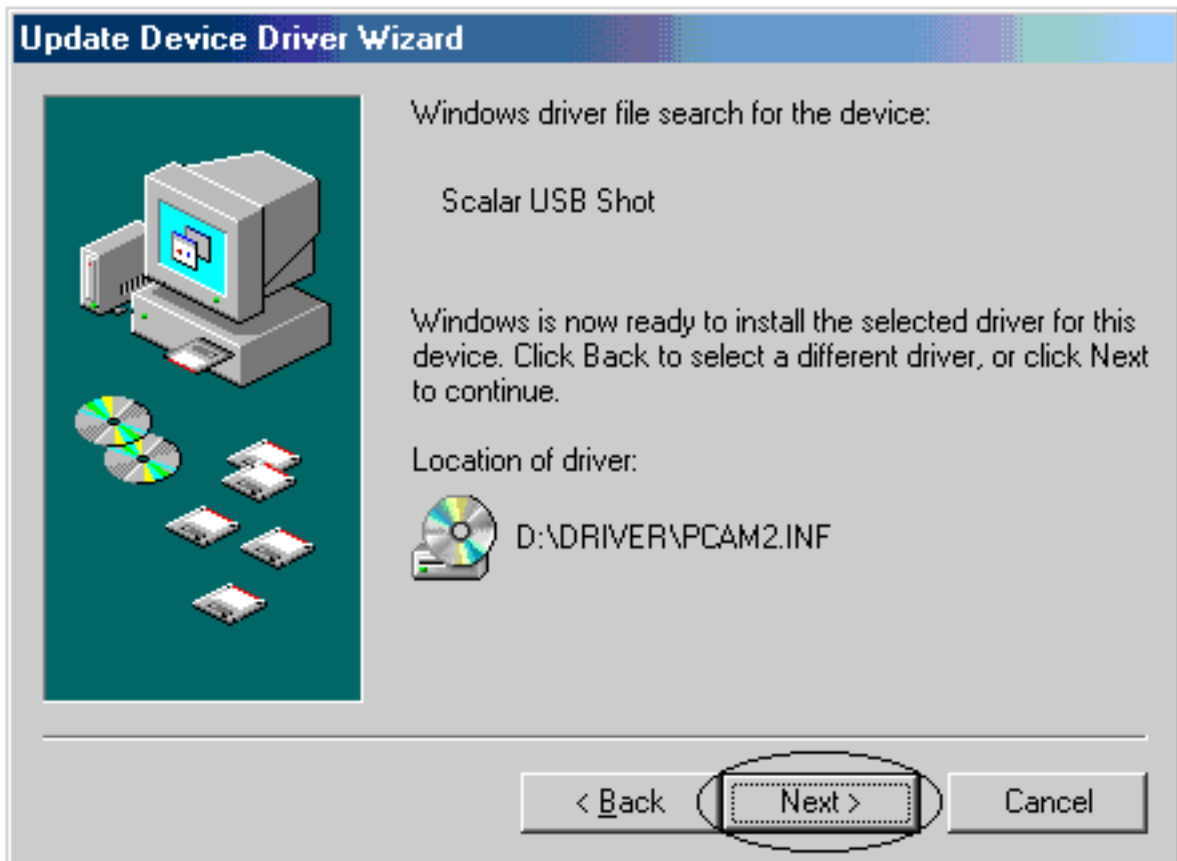
Click the [OK] button.



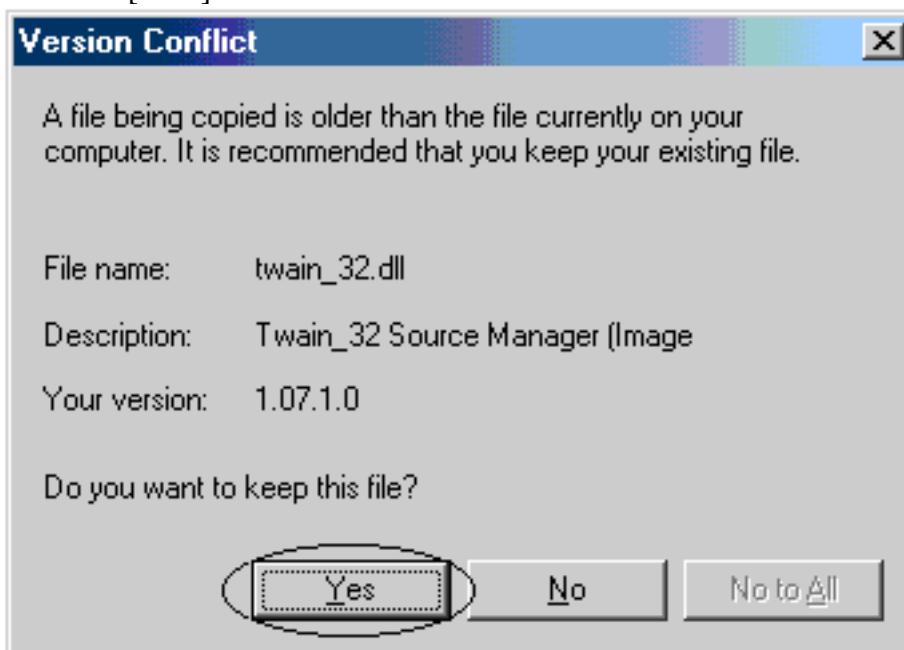
When the screen shown above is displayed, click the [Next] button.



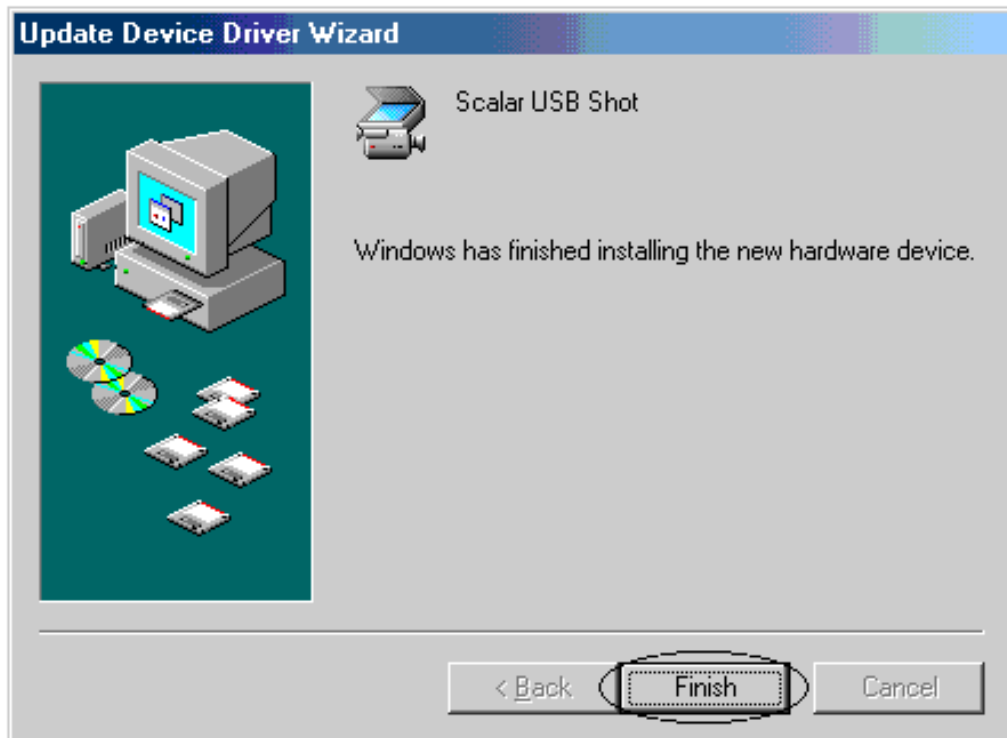
Click the [Yes (Y)] button.



Click the [Next] button.



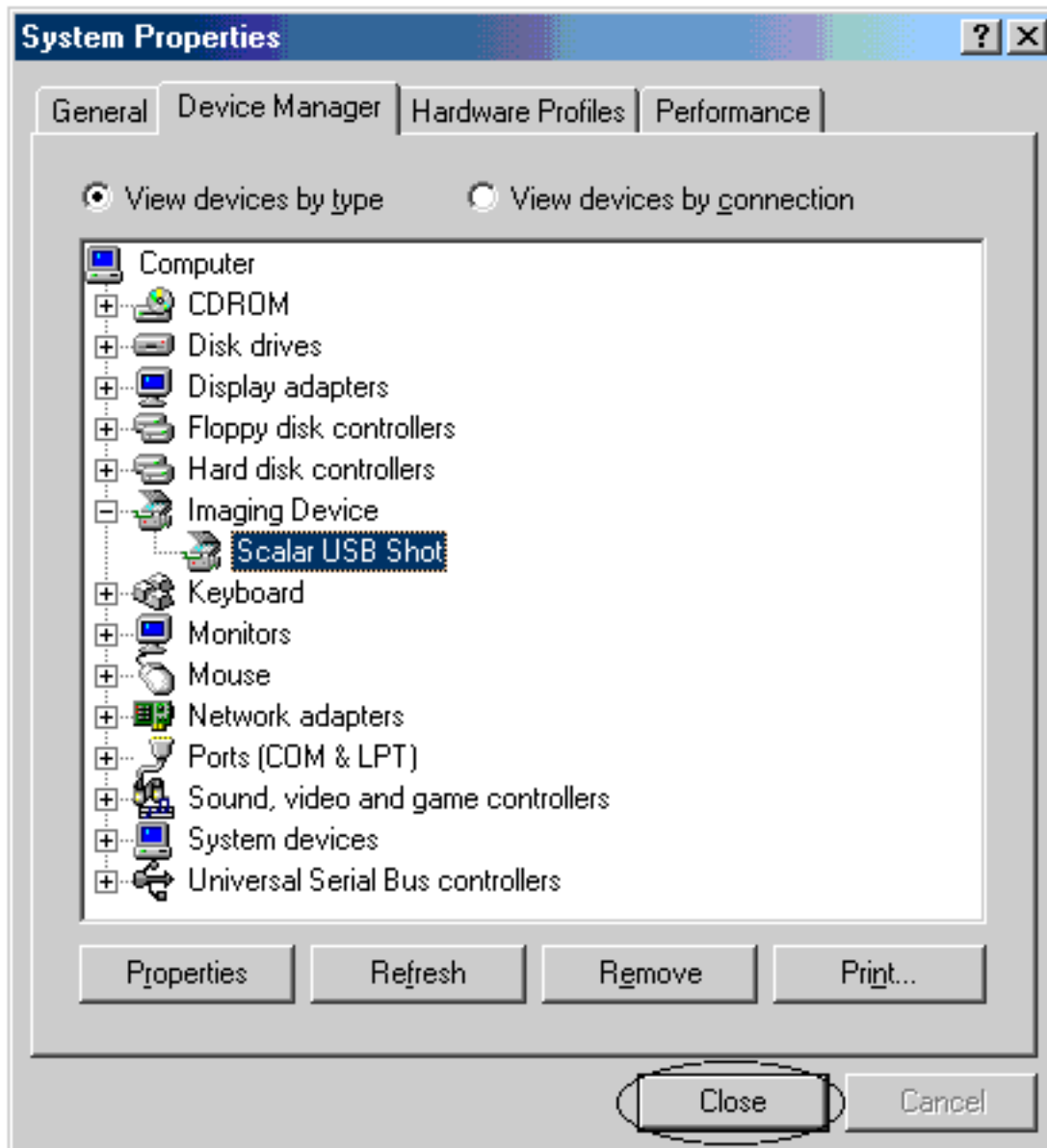
When the screen shown above is displayed, click the [Yes (Y)] button.



Driver installation starts. The screen shown above is displayed after a brief interval. Click the [Finish] button.



Click the [Close] button.



Click the [Close] button.
This completes the driver update.